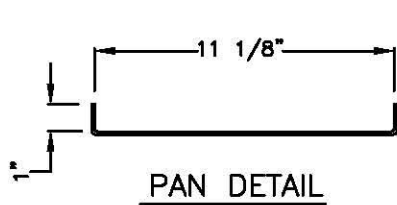
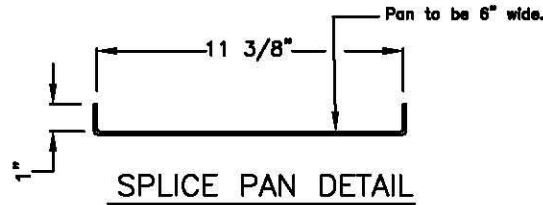


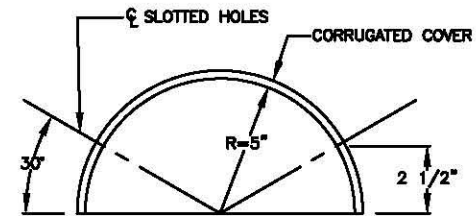
ELEVATION



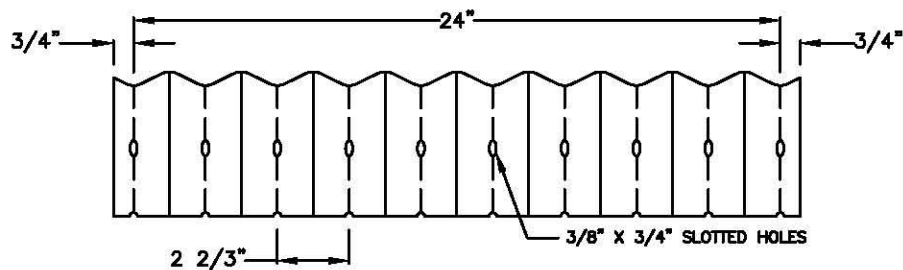
PAN DETAIL



SPLICE PAN DETAIL



SECTION



COVER DETAIL

NOTES:

1. Corrugated Covers are furnished in 2' lengths only. Material shall be 2 2/3" x 1/2" Corrugations, galvanized in accordance with AASHTO M-218. Gauge shall be 12 Gauge. Perforations shall be as shown on cover detail
2. Pans are furnished in 10' lengths only, receiving pans shall be 12 gauge with 2 oz. galvanized coating. Perforations shall be as shown on pan detail.
3. End Plates on corrugated covers shall be 12 gauge with 2 oz. galvanized coating.
4. Drop Outlet Stubs shall be furnished in 9 1/2" Outside Diameter. Minimum 12 gauge with 2 oz. galvanized coatings. Location of the drop outlet structure shall be per the installation criteria.
5. Asphalt Coatings when specified, shall conform to AASHTO M-190, type A.

NO.	DATE	BY
1	8/10/02	BLC
REVISIONS		



LANE ENTERPRISES, INC.

TITLE

10" DECK DRAIN
(S-21914)

DRAWN BY: BLC

DRAWING NO.
A0183

PAGE
1 OF 1

DATE
1/25/02