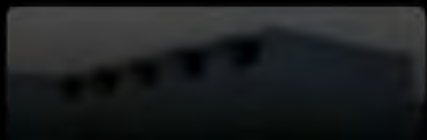




WHEN YOU WANT THE BEST

HIGHLY ENGINEERED DRAINAGE SYSTEMS

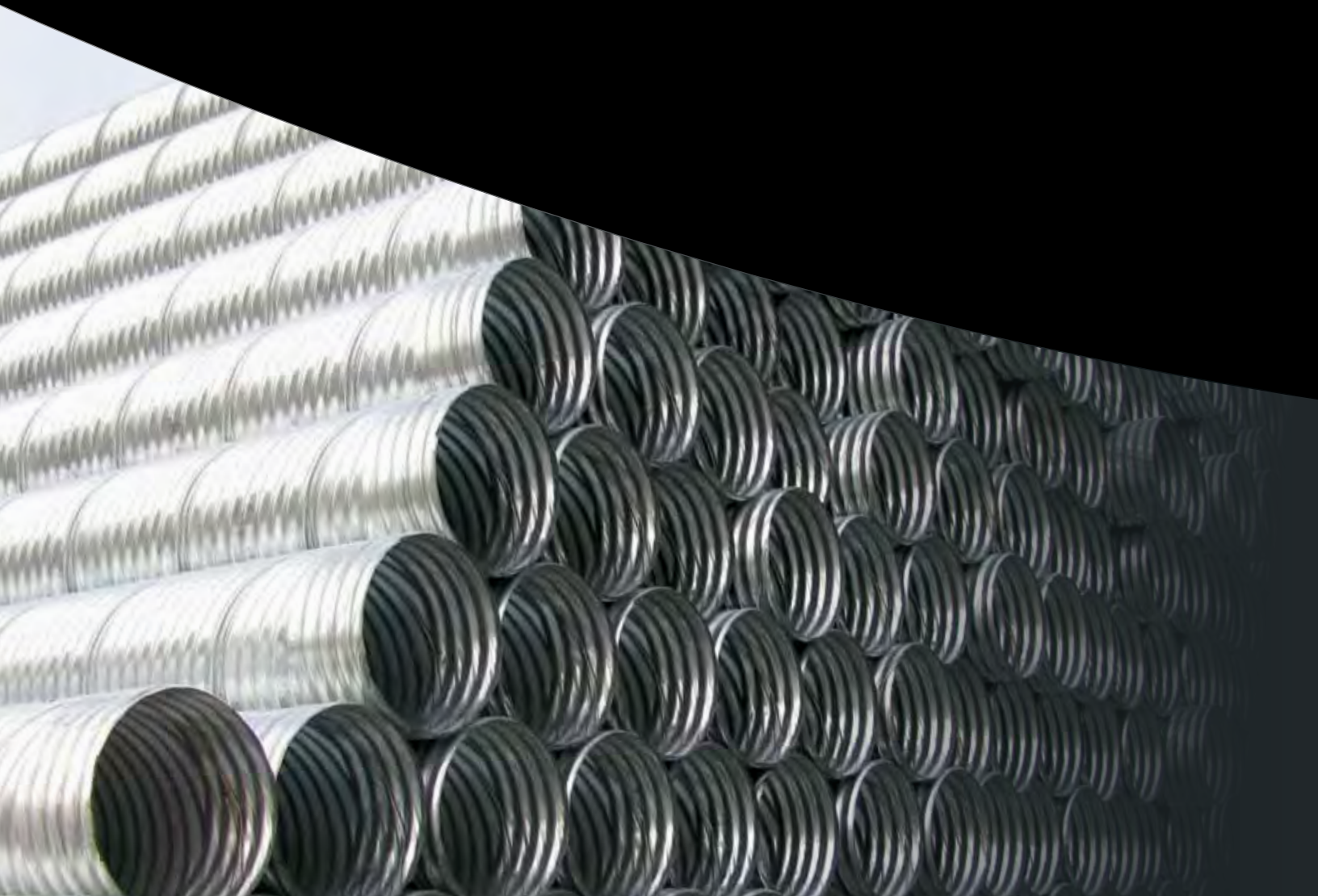


THE LANE DIFFERENCE

ABOUT LANE

As a full-line manufacturer of corrugated metal and plastic drainage products, Lane Enterprises, Inc. operates a number of plants in the Mid-Atlantic and Northeastern states producing various types of buried structures for the construction industry.

For more than 75 years, Lane has partnered with contractors, engineers and municipalities to supply reliable products that provide the highest service life, strength, versatility and economy. Our focus on quality products, responsive customer service and technical expertise has established a long, proven history of successful partnerships within the industries we serve.





THE CHOICE IS CLEAR

Simply put, the benefits of corrugated plastic and metal pipe translate into time and cost savings. Easier to handle and install than their concrete counterparts, the flexibility of plastic and metal allows for substantial cost advantages in the construction process. And, with steel coatings that extend service life to more than 100 years, the choice is clear.

FULL PRODUCT CAPABILITIES

- Corrugated Metal Pipe
- Spiral Rib Pipe
- Corrugated HDPE Pipe
- Structural Plate Pipe & Arches
- Low Profile Box Culvert
- Open Top Slotted Drain
- Stormwater Management Systems
- CFT (HDPE) Water Quality Unit
- CMP Sandfilter
- Custom Fabrications
- Welded Wire Mesh Gabions
- Structural Plate Headwalls
- LongSpan Bridge & Culvert Services
- Rebar and Custom Powder Coatings

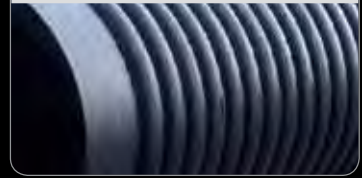
To learn more, visit: lane-enterprises.com

Trust Lane to provide the most responsive service in the business. From on-time job site delivery to quick turnaround on custom fabrications and reliable customer service; we aim for 100% customer satisfaction.

MATERIALS AND COATINGS



High Density Polyethylene (HDPE)

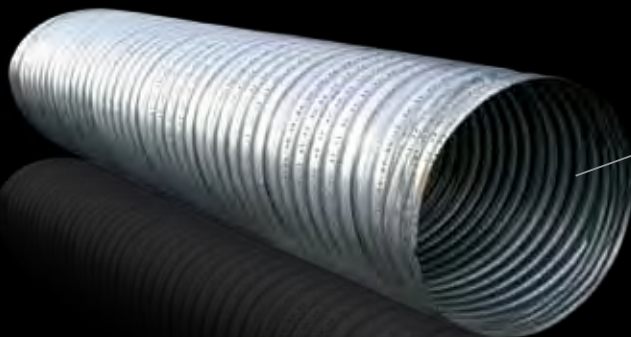


Get Longevity with HDPE

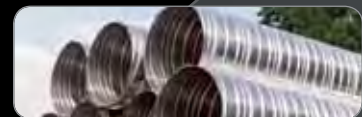
- 100-year service life



Aluminum



Steel



The Real Deal on Steel

- 100-year service life
- 100% traceable
- 100% recyclable

ALUMINIZED STEEL TYPE 2

Aluminized steel pipe combines the strength of steel with the corrosion resistance of aluminum. Pipe is produced from steel coil with a one-ounce per square foot aluminum coating.

POLYMER-COATED

A 10-mil polymer film is laminated over each side of a galvanized steel coil to create the premier coating available today. The protective film is a tough, rugged polyolefin laminate that provides galvanized CSP with a durable barrier that exceeds the corrosion and abrasion resistance of all other coatings with the added feature of providing a 100-year service life.

ALUMINUM ALLOY

The core material for aluminum alloy pipe is specially formulated to resist the effects of corrosion and abrasion. Corrosion resistance is further improved by cladding each surface of the core with a higher grade aluminum alloy that totals 10% of the total sheet thickness.

GALVANIZED STEEL

The traditional galvanized CSP is produced from steel coil with a two-ounces per square foot zinc coating.

ASPHALT-COATED

A uniform coating is applied to the interior and exterior of the pipe to increase the service life of galvanized CSP.

ESTIMATED SERVICE LIFE ¹	
MATERIAL	SERVICE LIFE
Aluminized Steel Type 2	Minimum 100 years (14 ga.)
Polymer-Coated Galvanized Steel	Minimum 100 years
Aluminum Alloy	Minimum 75 years
Galvanized Steel	Minimum 50 years
Asphalt-Coated Galvanized Steel	Extends the service life of Galvanized Steel

¹In the recommended environment (see CMP Service Life Guide)

PRODUCTS

CORRUGATED METAL PIPE

Corrugated metal pipe is available in a variety of corrugations and wall thicknesses to allow diameters up to 144". Corrugated steel pipe is available with a number of protective coatings to enhance service life, while corrugated aluminum pipe does not require a protective coating. These choices allow designers to economically match the best material to the site conditions.

Lane's **Spiral Rib Pipe** is a special class of corrugated metal pipe specifically designed for smooth flow applications. The corrugations consist of outwardly projected box ribs that create a smooth interior for enhanced hydraulic performance, making spiral rib pipe ideal for manhole-to-manhole storm sewer runs. Spiral rib pipe combines the strength of metal with the hydraulic characteristics of today's most efficient pipes, with diameters up to 120" (steel) and 72" (aluminum).



HIGH DENSITY POLYETHYLENE (HDPE) PIPE

Lane provides the complete product line to meet all your HDPE drainage needs - the full range of diameters, options for standard perforated patterns, and custom fabricated fittings. Lane's HDPE pipe offerings can meet all the subsurface drainage demands of your site, building, roads and pavements. Whether made from prime virgin resins or with recycled materials, Lane's HDPE pipe has the strength and service life needed for your project.



STRUCTURAL PLATE

Lane manufactures both steel and aluminum structural plate so that engineers, developers and contractors have a choice. Our comprehensive line of structural plate solutions can be used in a variety of applications and situations where other pipe products will not meet the requirements. Structural plate sheds the shipment limitations associated with large conventional pipe and boasts increased thicknesses and stiffer corrugations - resulting in maximum efficiency and durability.



WATER QUALITY DEVICES

Lane offers a number of water quality devices to supplement its storm water storage system offerings to provide the complete picture of storm water management. Devices used upstream of storage systems, alongside storm sewer runs, or downstream of storage systems are available to address all water quality requirements.

[Photo shows the placement of a Counter Flow Technology (CFT) water quality unit, a cost-effective and eco-friendly structural BMP designed to treat the "first flush" of a given storm event to meet any pretreatment requirements]



STORMKEEPER™ STORMWATER CHAMBERS

The addition of polypropylene storm water collection chambers to Lane's product offerings maximizes storage potential for the shallower excavations or where available storage depth is limited. Designed to meet and exceed the requirements of ASTM F2418, and available in two sizes with nominal heights of 30 and 45 inches, the chamber designations SK75 and SK180 were crafted to easily identify chamber storage capacities of 75 and 180 cubic feet. StormKeeper™ Stormwater Chambers are injection-molded for uniform, precise material placement that provides a high level of structural integrity and arch stiffness.



WELDED WIRE MESH GABIONS

Lane is a manufacturer of preassembled welded wire mesh gabions and gabion mattresses. Welded wire mesh means that each point of contact in the grid is actually welded to form a very rigid connection, making this type of gabion indispensable in achieving that perfectly flat, sharp appearance a structure should maintain.



POWDER COATINGS

Originally developed to meet the early-day demands for epoxy coated rebar, Lane's present-day facility accommodates the construction industry's expanded applications, including structural steel, guide rail, bridge rail, sound wall posts, pilings and a host of other construction materials that require a higher level of functional protection.

To learn more, visit our powder coatings website: lanecoatings.com



OPEN-TOP SLOTTED DRAIN PIPE (OTSD)

Lane's OTSD is a practical combination of pipe and inlet structure that reduces or eliminates the need for traditional catch basin structures and has the added value of efficiently managing surface water sheet flow. A completely galvanized system constructed by securing a slotted grate atop Lane's corrugated metal pipe. OTSD is designed specifically to intercept and convey sheet flow on roadways, loading docks, parking lots, airport surfaces or factory floors.



ALUMINUM STRUCTURAL PLATE HEADWALLS

Structural plate headwalls are a cantilevered, anchored retaining wall system. Integrating a structural plate headwall into a selected culvert size and shape creates an installation-friendly bridge replacement solution. With no rebar schedules, mix specifications, pours, frequent testing, cure times, etc., structural plate headwalls are an economic alternative to concrete.

Lane offers a turnkey approach for the aluminum structural plate headwall product, including engineering design, fabrication, delivery and installation supervision. The program works well for municipal material bids, provides an efficiency to the civil site engineer, and affords a more efficient alternate to the more traditional poured-in-place concrete headwall system.



LONGSPAN BRIDGE & CULVERT

The addition of special features such as longitudinal and circumferential stiffening elements to conventional structural plate structures permits the use of spans exceeding 80'. The tremendous popularity of these larger span structures ("Buried Bridges") is due to the development of national specifications by the American Association of State Highway and Transportation Officials (AASHTO).



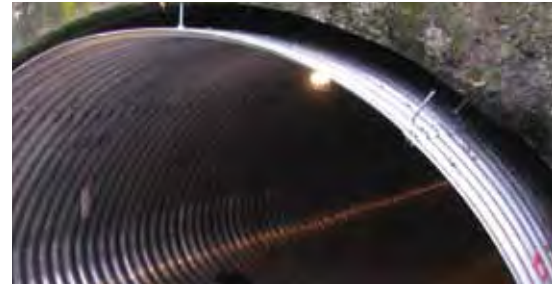
As a service to the industry, Lane Enterprises, Inc. created LongSpan Bridge & Culvert (LSBC) to provide engineering and field services associated with the design and installation of long span structural plate structures. LSBC provides engineering consultation and certified design services to facilitate regulatory approvals, in addition to assembly and construction monitoring during the backfilling operation.

LSBC helps clients choose from a variety of culvert material and end wall structure types to ensure a complete project that most appropriately meets their structural and aesthetic requirements.

DESIGN with LANE—your project is important, deadline oriented and must be cost efficient. Let Lane's experience go to work for you and experience a well-executed plan on your next project.

PIPE REHABILITATION

Trenchless methods of pipe rehabilitation are now the primary consideration when large conduits or other buried structures have reached the end of their service life, and the practice of slip lining is the most efficient means to this end. As one of the leading manufacturers of corrugated metal pipe and structural plate products, Lane is armed with a plethora of reline materials to meet the specific challenges or design requirements of the rehabilitation. With years of experience in these types of projects Lane is also especially suited to provide engineering consultation to help ensure these installations go as smoothly as possible.



STORM WATER MANAGEMENT

As a manufacturer of the three leading materials used in today's underground storm water storage market Lane is uniquely suited to assist the civil site design team in the selection of the most appropriate storage system for the application. Polypropylene storm water collection chambers, corrugated HDPE pipe systems, and corrugated metal pipe systems each afford different attributes that may better lend themselves to a particular application, cost savings, or both.



Lane's StormStorage online configuration tool was created to seamlessly achieve the best possible storm water management solution for your next project.

Log on and experience simplicity.

STORM-STORAGE.COM



FAST AND DEPENDABLE SERVICE

At Lane, we don't just provide quality products – we offer solutions. Whether it's finding the most economical way to specify a project, or recommending the most durable and lightweight product for a challenging application, we pride ourselves on partnering with customers to meet any need.

The professionals at Lane understand what it means to provide good service ... the kind of service that transforms a business relationship from “supply vendor” into “trusted partner.” Our customers tell us they appreciate our fast turnaround on products and our quick response time to their needs. It's that kind of service and attention you can expect when you work with Lane.

WHAT YOU CAN EXPECT

- Knowledgeable experts who can answer questions and provide solutions
- Quick turnaround on requests, phone calls and product delivery
- Fast decisions made by local decision-makers
- Dependable project management for any size job



The Lane mission is to be a profitable, decentralized, responsive supplier of manufactured products and services to the construction industry.





LANE Enterprises, Inc.

3905 Hartzdale Drive, Suite 514

Camp Hill, PA 17011

P: 717.761.8175 • F: 717.761.5055

lane-enterprises.com

LANE Facilities

PENNSYLVANIA

Bedford 814.623.1191

Carlisle 717.249.8342

King of Prussia 610.272.4531

Pulaski 724.652.7747

Shippensburg 717.532.5959

VIRGINIA

Bealeton 540.439.3201

Dublin 540.674.4645

Wytheville 276.223.1051

NEW YORK

Ballston Spa 518.885.4385

Bath 607.776.3366

NORTH CAROLINA

Statesville 704.872.2471

Lane provides a complete range of drainage solutions for every application.

LANE Products

Corrugated Metal Pipe

Spiral Rib Pipe

Corrugated HDPE Pipe

Structural Plate Pipe

Low Profile Box Culvert

Open Top Slotted Drain

Stormwater Management Systems

CFT (HDPE) Water Quality Unit

CMP Sandfilter

Custom Fabrications

Welded Wire Mesh Gabions

Structural Plate Headwalls

LongSpan Bridge & Culvert Services

Rebar and Custom Powder Coatings



ncspa.org



plasticpipe.org

