

StormKeeper SK290

The StormKeeper family of products are the highest quality and structurally sound stormwater chambers available on the market and meet the full requirements of ASTM F2418. The StormKeeper family of chambers are designed utilizing the most sophisticated and comprehensive techniques to meet the stringent AASHTO LRFD and ASTM requirements. Intended for use under traffic and non traffic areas, StormKeeper provides a truly cost-effective and structurally superior system to provide underground stormwater storage saving valuable land and protecting the environment.



StormKeeper SK290

Nominal Dimensions

Size (L x W x H)	51.8" x 100.5" x 59.5"
Chamber Storage	109.7 cf
Min. Installed Storage	164.4 cf
Weight	125 lbs

StormKeeper SK290 End Caps

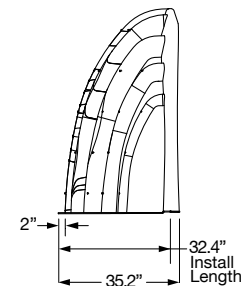
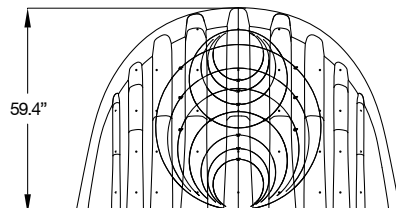
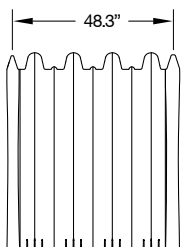
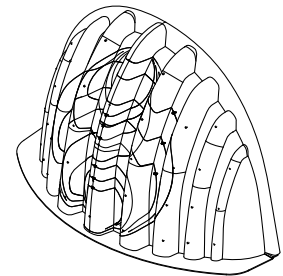
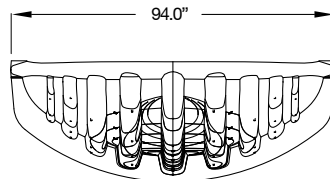
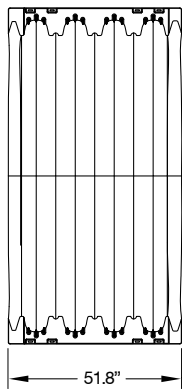
Nominal Dimensions

Size (L x W x H)	35.2" x 94.0" x 59.4"
End Cap Storage	39.6 cf
Min. Installed Storage	114.4 cf
Weight	82 lbs

Shipping

Nominal Dimensions

- 10 chambers per pallet
- 10 end caps per pallet
- 11 pallets per truck



StormKeeper SK290

Volume of Excavation Required Per Chamber/End Cap

	Stone Bedding Depth		
	9"	12"	18"
StormKeeper SK290	10.5 cy	10.8 cy	11.5 cy
StormKeeper SK290 End Cap	9.6 cy	10.0 cy	10.6 cy

Assumes 9" of separation between chamber rows, 12" of perimeter stone in front of end caps and 24" of cover. Should depth of cover exceed 24", the volume of excavation will increase accordingly.

Storage Volume Per Chamber/End Cap

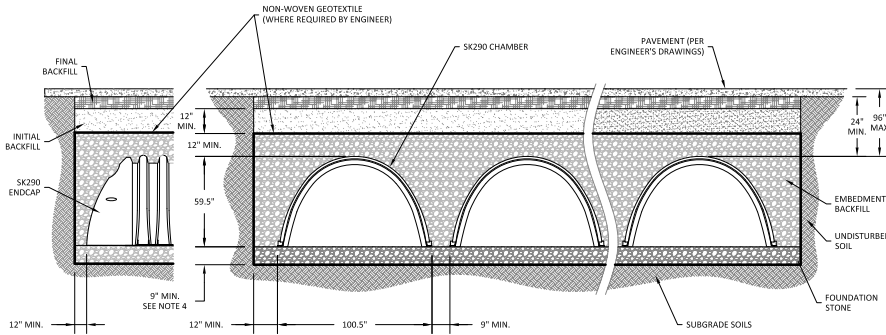
	Chamber Volume Only	Chamber and Stone Volume Bedding Depth		
		9"	12"	18"
StormKeeper SK290	109.7 cf	164.4 cf	168.0 cf	175.4 cf
StormKeeper SK290 End Cap	39.6 cf	114.4 cf	117.7 cf	124.5 cf

Assumes 12" stone above chambers, 9" of stone between chambers and 40% stone porosity. End cap volume assumes 12" of stone perimeter.

Amount of Stone Per Chamber/End Cap

	Stone Bedding Depth		
	9"	12"	18"
StormKeeper SK290	5.1 cy	5.4 cy	6.1 cy
StormKeeper SK290 End Cap	6.9 cy	7.2 cy	7.9 cy

Assumes 12" of stone above, 9" row spacing, and 12" of perimeter stone in front of end caps.



MANUFACTURER'S WARRANTY

Lane ensures, certifies and documents that SK290 StormKeeper Stormwater Chambers shipped to the job site meet the above claims and standards, and warranties the product is free of any material or workmanship defects.



Lane's StormKeeper™ Chamber Systems meet the requirements of the **Build America, Buy America (BABA)** Act. This means everything is made in the United States—from sourcing raw materials to manufacturing and final assembly.

Stage vs. Storage for StormKeeper SK290

Depth (in)	Chamber Volume (cf)	Installed Volume (cf)	Depth (in)	Chamber Volume (cf)	Installed Volume (cf)
1	0.00	1.22	42	75.75	96.87
2	0.00	2.45	43	77.76	99.30
3	0.00	3.67	44	79.74	101.71
4	0.00	4.90	45	81.69	104.11
5	0.00	6.12	46	83.61	106.48
6	0.00	7.35	47	85.50	108.84
7	0.00	8.57	48	87.35	111.18
8	0.00	9.79	49	89.16	113.49
9	0.00	11.02	50	90.94	115.78
10	3.05	14.07	51	92.67	118.04
11	5.51	16.77	52	94.36	120.28
12	7.96	19.47	53	95.99	122.48
13	10.39	22.15	54	97.57	124.65
14	12.81	24.83	55	99.10	126.79
15	15.22	27.50	56	100.56	128.90
16	17.62	30.16	57	101.96	130.96
17	20.01	32.82	58	103.28	132.98
18	22.39	35.47	59	104.52	134.94
19	24.76	38.12	60	105.67	136.86
20	27.12	40.76	61	106.71	138.71
21	29.47	43.39	62	107.62	140.48
22	31.80	46.01	63	108.34	142.13
23	34.12	48.63	64	108.80	143.63
24	36.43	51.24	65	109.15	145.07
25	38.73	53.84	66	109.42	146.45
26	41.02	56.44	67	109.60	147.79
27	43.30	59.04	68	109.67	149.05
28	45.56	61.62	69	109.67	150.28
29	47.81	64.19	70	109.67	151.50
30	50.05	66.76	71	109.67	152.73
31	52.28	69.32	72	109.67	153.95
32	54.49	71.87	73	109.67	155.17
33	56.69	74.41	74	109.67	156.40
34	58.88	76.95	75	109.67	157.62
35	61.05	79.48	76	109.67	158.85
36	63.21	82.00	77	109.67	160.07
37	65.35	84.51	78	109.67	161.30
38	67.47	87.00	79	109.67	162.52
39	69.57	89.49	80	109.67	163.74
40	71.65	91.96	81	109.67	164.97
41	73.71	94.42			

Assumes a void of 40% in the stone. Based on 12" of stone above and 9" of stone below the chambers. Add another 1.22 cubic feet of storage for each inch of additional stone in the foundation.

