



# STORM STORAGE

ONLINE CONFIGURATION TOOL



## STORAGE

As a manufacturer of the three leading materials used for underground storm water storage, Lane is uniquely suited to assist the civil site design team in the selection of the most appropriate system for the application—polypropylene chambers, HDPE pipe, and CMP systems. Each has a distinct value that may better lend itself to a particular application, cost savings, or both.

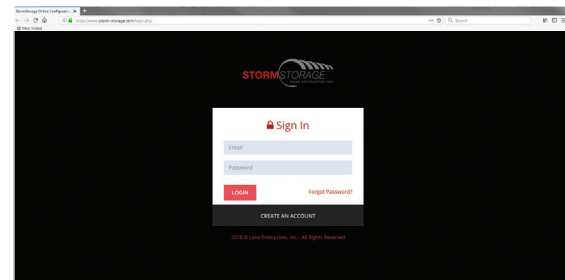
Lane's StormStorage™ online configuration tool was created to seamlessly achieve the best possible storm water management solution for your next project.

The StormStorage™ tool allows you to quickly and efficiently configure a stormwater system in three easy steps:

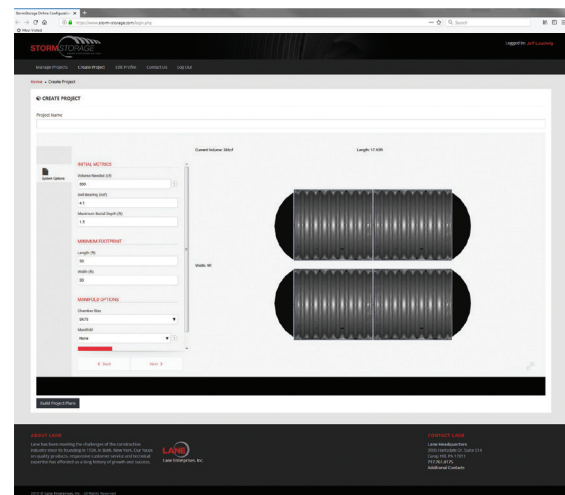
- 1 Input your project's design parameters.
- 2 Edit your project as necessary.
- 3 Submit your project.

StormStorage™ will take your configured project and create a complete set of AutoCAD and PDF files containing important construction information.

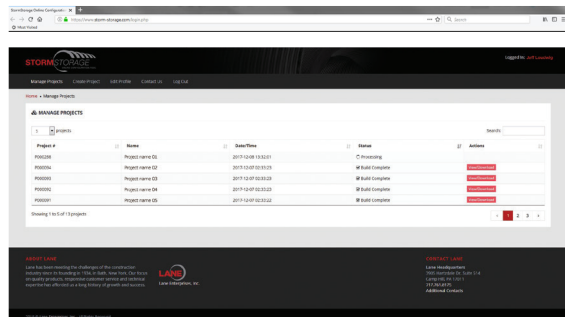
To find out more about the StormStorage™ online configurator tool contact a Lane representative in your area or go to Lane's website at [lane-enterprises.com](http://lane-enterprises.com).



LOG IN TO YOUR ACCOUNT.



CONFIGURE YOUR PROJECT.



MANAGE YOUR PROJECT.

*THE PRODUCT // StormStorage™ online configurator is the results driven, turnkey storm water management solution for your next project.*

## **STORMKEEPER™ CHAMBERS**

StormKeeper™ Stormwater Chambers maximize the underground storage potential where available storage depth is limited, but still provide great flexibility with minimum and maximum cover heights of 2' and 8', respectively. Used primarily beneath paved areas to preserve usable real estate, they also find application in green spaces for Low Impact Development (LID) practices.



## **CORRUGATED METAL PIPE (CMP)**

Steel and aluminum pipe is available in a variety of corrugations and wall thicknesses in diameters up to 144". Corrugated steel pipe (CSP) is available in several protective coatings to provide design service life, while aluminum pipe does not require protective coating. These choices allow designers to economically match the best material to the site conditions.



Our CMP products are available in four different material types to economically meet the environmental and service life conditions defined for each installation.

- Aluminum Alloy
- Galvanized Steel Polymer-Coated
- Aluminized Steel (Type 2)
- Galvanized Steel

## **CORRUGATED HDPE PIPE**

Lane provides the complete product line to meet all your HDPE drainage needs - the full range of diameters, single-wall and dual-wall productions, options for standard perforated patterns, and custom fabricated fittings. Lane's HDPE pipe offerings can meet all the subsurface drainage demands of your site, building, roads and pavements. Whether made from prime virgin resins or with recycled materials, Lane's HDPE pipe has the strength and service life needed for your project.



# **LANE**

As a full-line manufacturer of corrugated metal and plastic drainage products, Lane Enterprises, Inc. operates a number of plants in the Mid-Atlantic and Northeastern states producing various types of buried structures for the construction industry.

For more than 80 years, Lane has partnered with contractors, engineers, and municipalities to supply reliable products that provide the highest service life, strength, versatility, and economy. Our focus on quality products, responsive customer service, and technical expertise has established a long, proven history of successful partnerships within the industries we serve.



**LANE Enterprises, Inc.**

3905 Hartzdale Drive, Suite 514  
Camp Hill, PA 17011  
P: 717.761.8175 • F: 717.761.5055  
[lane-enterprises.com](http://lane-enterprises.com)

**LANE Facilities**

**PENNSYLVANIA**

Bedford 814.623.1191  
Carlisle 717.249.8342  
King of Prussia 610.272.4531  
Pulaski 724.652.7747  
Shippensburg 717.532.5959

**VIRGINIA**

Bealeton 540.439.3201  
Dublin 540.674.4645  
Wytheville 276.223.1051

**NEW YORK**

Ballston Spa 518.885.4385  
Bath 607.776.3366

**NORTH CAROLINA**

Statesville 704.872.2471

**TEXAS**

Temple 254.727.3346

**CORPORATE HEADQUARTERS**

Camp Hill 717.761.8175

**LANE Products**

- Corrugated Metal Pipe
- Spiral Rib Pipe
- Corrugated HDPE Pipe
- Corrugated Polypropylene Pipe
- Structural Plate Pipe and Arches
- Structural Plate Box Culverts
- Storm Water Collection Chambers
- Storm Water Management Systems
- Storm Water Filters
- CFT (HDPE) Water Quality Unit
- CMP Sandfilter
- Open Top Slotted Drain
- Welded Wire Mesh Gabions
- Structural Plate Headwall-Culvert Systems
- Custom Fabrications (Pond Kits, Trash Racks, etc.)
- Long Span Bridge & Culvert Services
- Rebar and Custom Powder Coatings

