

StormKeeper SK31

The StormKeeper family of products are the highest quality and structurally sound stormwater chambers available on the market and meet the full requirements of ASTM F2418. The StormKeeper family of chambers are designed utilizing the most sophisticated and comprehensive techniques to meet the stringent AASHTO LRFD and ASTM requirements. Intended for use under traffic and non traffic areas, StormKeeper provides a truly cost-effective and structurally superior system to provide underground stormwater storage saving valuable land and protecting the environment.



StormKeeper SK31

Nominal Dimensions

Size (L x W x H)	2230mm x 861mm x 404mm
Chamber Storage	0.42m ³
Min. Installed Storage	0.88m ³
Weight	14.5kg

StormKeeper SK31 End Caps

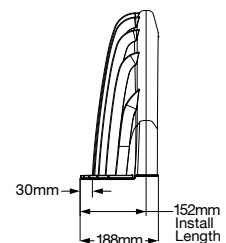
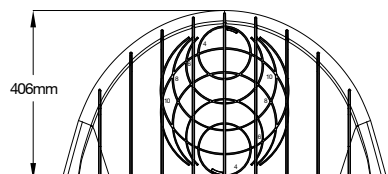
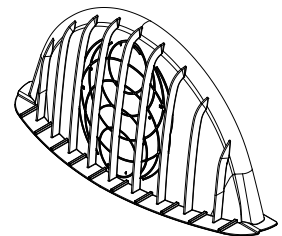
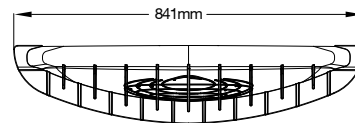
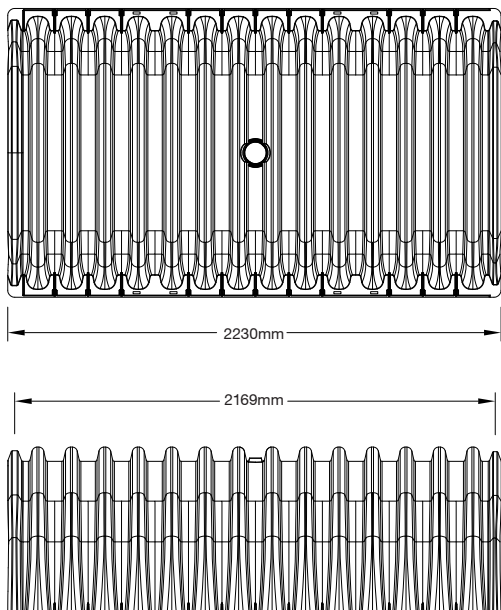
Nominal Dimensions

Size (L x W x H)	188mm x 841mm x 406mm
End Cap Storage	0.01m ³
Min. Installed Storage	0.14m ³
Weight	1.6kg

Shipping

Nominal Dimensions

- 45 chambers per pallet
- 20 end caps per pallet
- 18 pallets per truck



StormKeeper SK31

Volume of Excavation Required Per Chamber/End Cap

	Stone Bedding Depth		
	150mm	300mm	450mm
StormKeeper SK31	2.2m ³	2.53m ³	2.86m ³
StormKeeper SK31 End Cap	0.46m ³	0.53m ³	0.60m ³

Assumes 150mm of separation between chamber rows, 300mm of perimeter stone in front of end caps and 450mm of cover. Should depth of cover exceed 450mm, the volume of excavation will increase accordingly.

Storage Volume Per Chamber/End Cap

	Chamber Volume Only	Chamber and Stone Volume Bedding Depth		
		150mm	300mm	450mm
StormKeeper SK31	0.42m ³	0.87m ³	1.00m ³	1.14m ³
StormKeeper SK31 End Cap	0.01m ³	0.14m ³	0.16m ³	0.19m ³

Assumes 150mm stone above chambers, 150mm of stone between chambers and 40% stone porosity. End cap volume assumes 300mm of stone perimeter.

Amount of Stone Per Chamber/End Cap

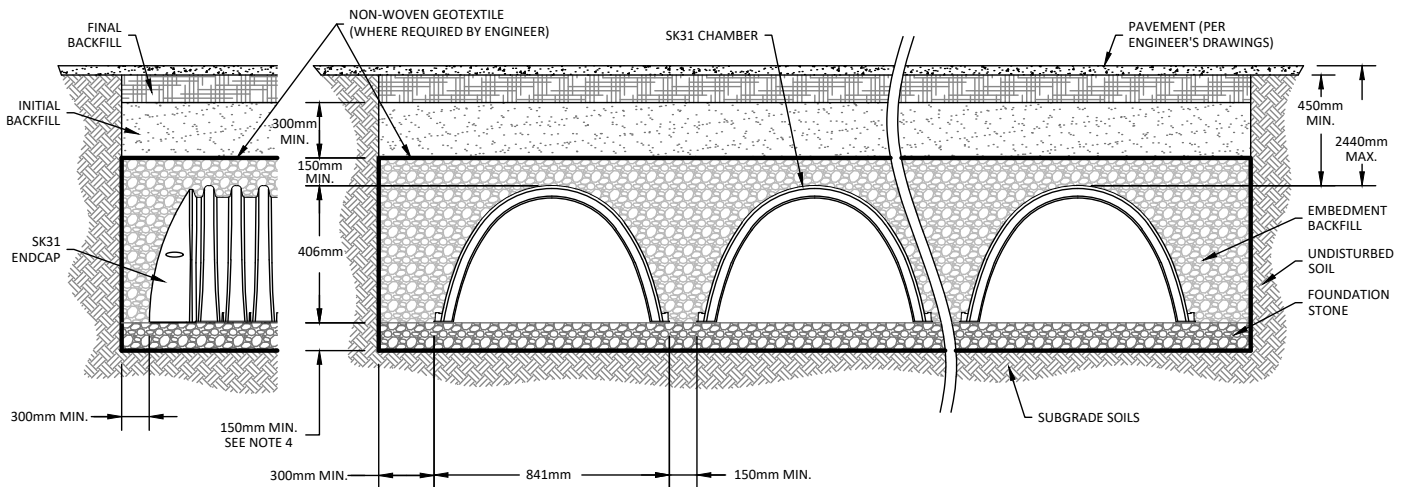
	Stone Bedding Depth		
	150mm	300mm	450mm
StormKeeper SK31	1.1m ³	1.4m ³	1.8m ³
StormKeeper SK31 End Cap	0.3m ³	0.4m ³	0.4m ³

Assumes 150mm of stone above, 150mm row spacing, and 300mm of perimeter stone in front of end caps.

Stage vs. Storage for StormKeeper SK31

Depth (mm)	Chamber Volume (m ³)	Installed Volume (m ³)	Depth (mm)	Chamber Volume (m ³)	Installed Volume (m ³)
25	0.000	0.022	381	0.314	0.523
51	0.000	0.045	406	0.341	0.562
76	0.000	0.067	432	0.366	0.600
102	0.000	0.089	457	0.388	0.635
127	0.000	0.112	483	0.406	0.668
152	0.000	0.134	508	0.417	0.697
178	0.039	0.180	533	0.422	0.722
203	0.077	0.225	559	0.424	0.746
229	0.114	0.269	584	0.424	0.768
254	0.150	0.313	610	0.424	0.790
279	0.185	0.357	635	0.424	0.813
305	0.219	0.400	660	0.424	0.835
330	0.252	0.442	686	0.424	0.857
356	0.284	0.483	711	0.424	0.880

Assumes a void of 40% in the stone. Based on 150mm of stone above and below the chambers.



MANUFACTURER'S WARRANTY

Lane ensures, certifies and documents that SK31 StormKeeper Stormwater Chambers shipped to the job site meet the above claims and standards, and warrants the product is free of any material or workmanship defects.



Lane Enterprises, Inc.
 275 Grandview Ave, Suite 300
 Camp Hill, PA 17011
 P: 717.761.8175 • F: 717.761.5055
lane-enterprises.com/StormKeeper