

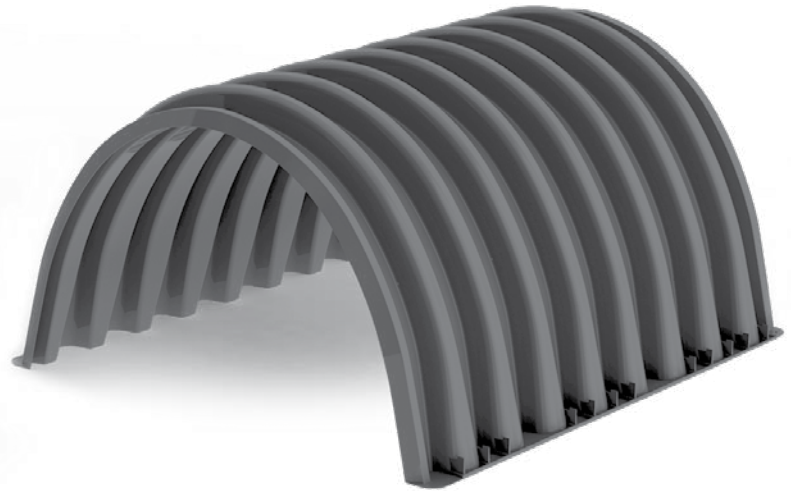
## StormKeeper SK180

The StormKeeper family of products are the highest quality and structurally sound stormwater chambers available on the market. The StormKeeper family of chambers are designed utilizing the most sophisticated and comprehensive techniques to meet the stringent AASHTO LRFD and ASTM requirements. Intended for use under traffic and nontraffic areas, StormKeeper provides a truly cost-effective and structurally superior system to provide underground stormwater storage saving valuable land and protecting the environment.

### StormKeeper SK180

Nominal Dimensions

Size (L x W x H)	2253mm x 1976mm x 1156mm
Chamber Storage	3.22m <sup>3</sup>
Min. Installed Storage	5.10m <sup>3</sup>
Weight	57.6kg



### StormKeeper SK180 End Caps

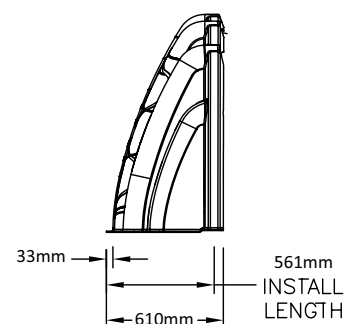
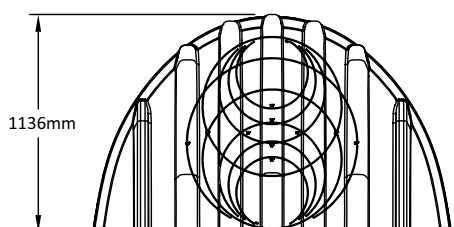
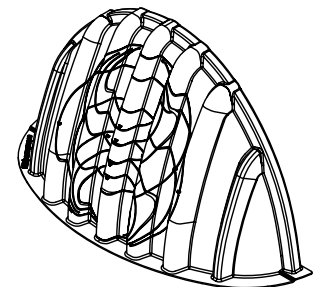
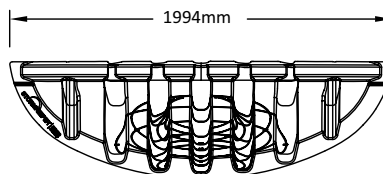
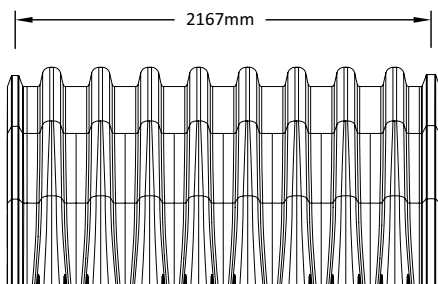
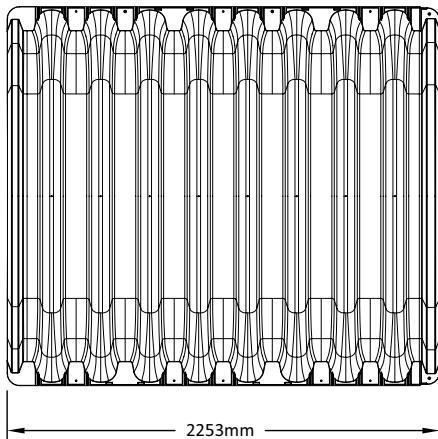
Nominal Dimensions

Size (L x W x H)	609mm x 1994mm x 1136mm
End Cap Storage	0.43m <sup>3</sup>
Min. Installed Storage	1.53m <sup>3</sup>
Weight	23.6kg

### Shipping

Nominal Dimensions

- 17 chambers per pallet
- 12 end caps per pallet
- 8 pallets per truck



# StormKeeper SK180

## Volume of Excavation Required Per Chamber/End Cap

	Stone Bedding Depth			
	230mm	300mm	375mm	450mm
StormKeeper SK180	8.66m <sup>3</sup>	8.99m <sup>3</sup>	9.34m <sup>3</sup>	9.69m <sup>3</sup>
StormKeeper SK180 End Cap	3.44m <sup>3</sup>	3.57m <sup>3</sup>	3.71m <sup>3</sup>	3.85m <sup>3</sup>

Assumes 200mm of separation between chamber rows, 300mm of perimeter in front of end caps, and 450mm of cover minimum. Should depth of cover exceed 450mm the volume of excavation will increase accordingly.

## Storage Volume Per Chamber/End Cap

	Chamber Volume Only	Chamber and Stone Volume Stone Bedding Depths			
		230mm	300mm	375mm	450mm
StormKeeper SK180	3.22m <sup>3</sup>	5.09m <sup>3</sup>	5.23m <sup>3</sup>	5.37m <sup>3</sup>	5.51m <sup>3</sup>
StormKeeper SK180 End Cap	0.43m <sup>3</sup>	1.52m <sup>3</sup>	1.57m <sup>3</sup>	1.63m <sup>3</sup>	1.68m <sup>3</sup>

Assumes 292mm of stone above chambers, 200mm of stone between chambers and 40% stone porosity. End cap volume assumes 300mm of perimeter stone.

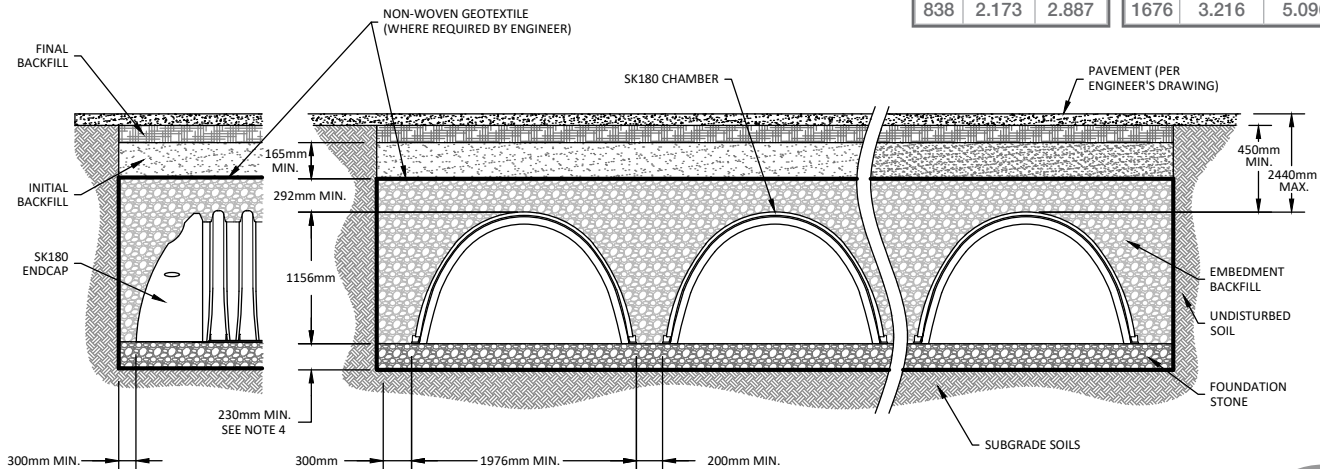
## Amount of Stone Per Chamber/End Cap

	Stone Bedding Depth			
	230mm	300mm	375mm	450mm
StormKeeper SK180	4.7m <sup>3</sup>	5.0m <sup>3</sup>	5.4m <sup>3</sup>	5.7m <sup>3</sup>
StormKeeper SK180 End Cap	2.7m <sup>3</sup>	2.8m <sup>3</sup>	3.0m <sup>3</sup>	3.1m <sup>3</sup>

Assumes 292mm of stone above, 200mm row spacing, and 300mm of perimeter stone in front of the end caps.

## Stage vs. Storage for StormKeeper SK180

Depth (mm)	Chamber Volume (m <sup>3</sup> )	Installed Volume (m <sup>3</sup> )	Depth (mm)	Chamber Volume (m <sup>3</sup> )	Installed Volume (m <sup>3</sup> )
25	0.000	0.048	864	2.250	2.981
51	0.000	0.096	889	2.326	3.075
76	0.000	0.144	914	2.400	3.167
102	0.000	0.192	940	2.472	3.258
127	0.000	0.240	965	2.542	3.348
152	0.000	0.288	991	2.610	3.437
178	0.000	0.336	1016	2.676	3.524
203	0.000	0.384	1041	2.740	3.611
229	0.000	0.432	1067	2.801	3.696
254	0.100	0.540	1092	2.860	3.779
279	0.200	0.648	1118	2.917	3.861
305	0.299	0.755	1143	2.970	3.941
330	0.397	0.862	1168	3.019	4.018
356	0.494	0.968	1194	3.065	4.094
381	0.590	1.074	1219	3.107	4.167
406	0.686	1.179	1245	3.143	4.236
432	0.781	1.284	1270	3.172	4.302
457	0.875	1.388	1295	3.189	4.360
483	0.968	1.492	1321	3.202	4.416
508	1.061	1.596	1346	3.211	4.469
533	1.152	1.699	1372	3.216	4.520
559	1.243	1.801	1397	3.216	4.568
584	1.332	1.903	1422	3.216	4.616
610	1.421	2.004	1448	3.216	4.664
635	1.509	2.105	1473	3.216	4.712
660	1.596	2.205	1499	3.216	4.760
686	1.682	2.305	1524	3.216	4.808
711	1.767	2.404	1549	3.216	4.856
737	1.851	2.502	1575	3.216	4.904
762	1.934	2.599	1600	3.216	4.952
787	2.015	2.696	1626	3.216	5.000
813	2.095	2.792	1651	3.216	5.048
838	2.173	2.887	1676	3.216	5.096



## MANUFACTURER'S WARRANTY

Lane ensures, certifies and documents that SK180 StormKeeper Stormwater Chambers shipped to the job site meets the above claims and standards, and warrants the product is free of any material or workmanship defects.



Lane Enterprises, Inc.  
 275 Grandview Ave, Suite 300  
 Camp Hill, PA 17011  
 P: 717.761.8175 • F: 717.761.5055  
[lane-enterprises.com/StormKeeper](http://lane-enterprises.com/StormKeeper)