

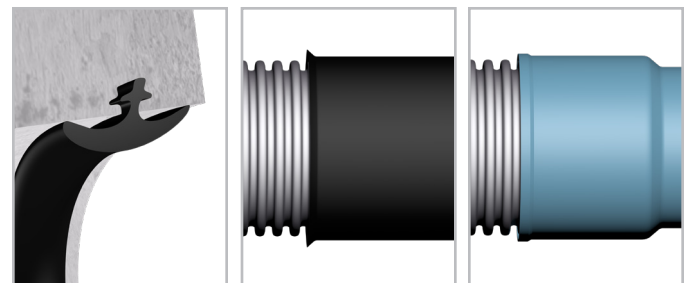
HD100, HD100EC, and PRO100 Flexible Manhole Connections

Product Note

Flexible manhole connections preserve the integrity of the connection by allowing small settlements and resisting shear effects while maintaining the seal, unlike traditional rigid (i.e. mortared) connections that could crack and potentially allow groundwater and/or soil infiltration. Three general types of flexible manhole connections are **available for Lane's HD100/HD100EC and PRO100 pipes**:

Gasketed Manhole Openings (e.g. A-LOK Premium™)

Gasketed Manhole Openings (e.g. A-LOK Premium™) - Gasketed Manhole Openings (e.g. A-LOK Premium™). This type of manhole opening is manufactured at the precast facility and involves casting a gasket into the concrete periphery of the round opening. The gasket is anchored in the concrete wall and protrudes to engage the pipe end, but a smooth surface must be sleeved onto the pipe to properly facilitate a compression seal with the gasket. HDPE bell sleeves and PVC bell hubs are commonly used for this purpose.



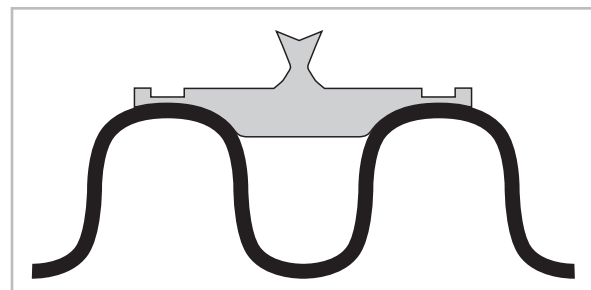
Typical gasket cast into the concrete wall.

HDPE bell sleeves (12" to 36"). Gasket installed between corrugations to seal inside bell.

PVC bell hubs (12" to 30"). Gasket installed in the bell heel before pipe insertion.

Corrugated Pipe Waterstop Grout Ring by Press-Seal® Corporation

Corrugated Pipe Waterstop Grout Ring by Press-Seal® Corporation - This connection involves securing the rubber gasket to the pipe with take-up clamps, positioning the keylock in the center of the opening, and then grouting the annulus. This may not technically be a flexible connection (entire gasket embedded in grout), but the results are the same – a seal is formed, and soil migration is stopped.



Rubber Boot Connectors (e.g. PSX Direct Drive by Press-Seal®, Kor-n-Seal® by Trelleborg)

Rubber Boot Connectors (e.g. PSX Direct Drive by Press-Seal®, Kor-n-Seal® by Trelleborg) - Boot connectors form a compression seal to the manhole opening but require a corrugated pipe adaptor to create a smooth surface on the corrugated pipe exterior to be properly sealed.

