

STORMTAP™

LATERAL CONNECTOR

StormTap™ Tee

Introducing Lane's StormTap™ Tee,
an Easy Field-Tap for Lateral Connection.

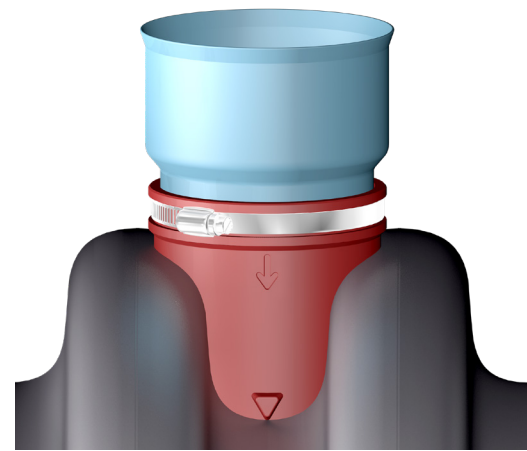
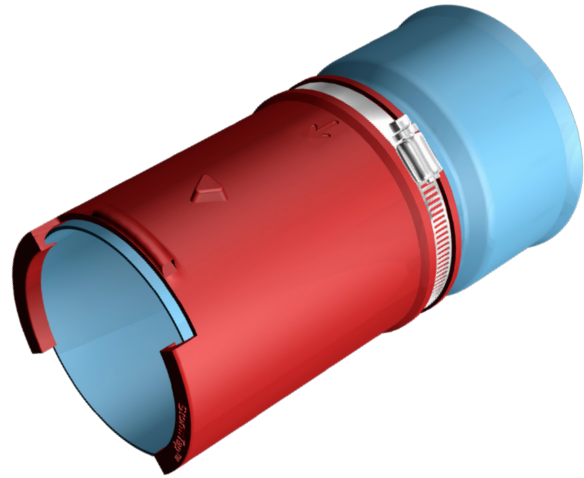
Designed Specifically for use on Lane's HD100/HD100EC and PRO100 Pipes.

The StormTap™ Tee is a Four-Component System:

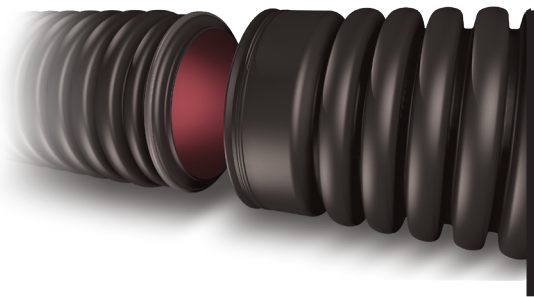
1. PVC Hub - SDR35 per ASTM D3034 and ASTM F1336.
2. Hub Gasket - Per ASTM F477 to Meet ASTM F1336. Joint Performance per ASTM D3212.
3. Rubber Sleeve - Provides Compression Seal, Hub Stop, Sleeve Retention Tab, Valley Retaining and Alignment Node, Clamp Groove.
4. Take-up Clamp - Stainless Steel Hose Clamp.

Easy Installation:

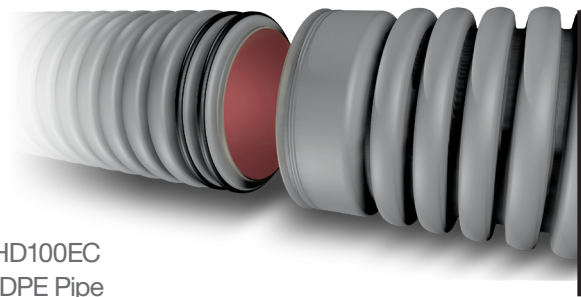
1. Core Drill Hole for Rubber Sleeve.
2. Fold Rubber Sleeve, Insert, using Valley Alignment Guides, and Expand Rubber Sleeve to Conform to Cored Hole.
3. Lubricate Rubber Sleeve Interior and PVC Hub Exterior with Soapy Water or Lane's Slipstick™ Lubricant.
4. Insert PVC Hub Until Hub Stop. Placing a Board Squarely on the Hub Rim to Hammer the Hub Home if Necessary.
5. Slide Stainless Steel Clamp onto the Clamp Groove and Tighten.
6. Secure Hub Gasket in Seating Area.
7. Insert Lateral Connector Pipe into the Hub Until a Square Stop is Formed at the Gasket.



StormTap™ Tee	Hole Saw	Pipe Range
4"	4 1/2"	12"-60"
6"	6 1/2"	12"-60"
8"	8 1/2"	12"-60"
10"	10 7/8"	15"-60"
12"	12 7/8"	18"-60"



HD100/HD100EC
Lane's HDPE Pipe



PRO100
Lane's Polypropylene Pipe



Lane Enterprises, Inc.
3905 Hartzdale Drive, Suite 514
Camp Hill, PA 17011
P: 717.761.8175 • F: 717.761.5055
lane-enterprises.com

© 2023 Lane Enterprises
RAKZID-9/12-AA